

# LEAD NOW.

# LEARN HOW.

## LEADERship

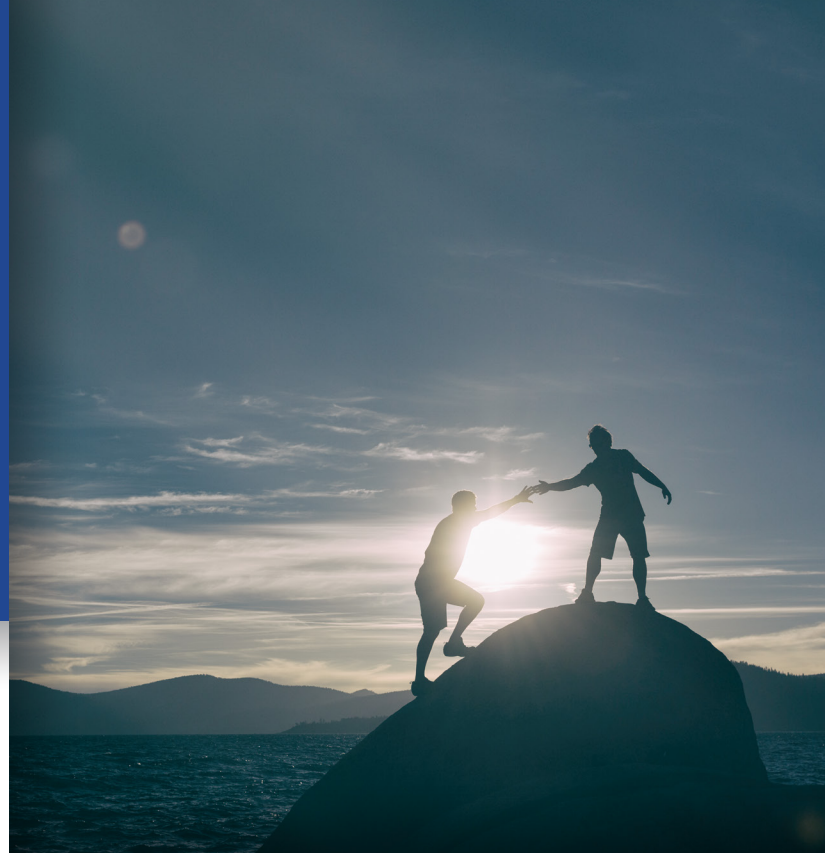
MARTIN COUNTY

**L**earn the tools to help you make a difference in Martin County. This esteemed leadership education program guides participants through an in-depth look into our community and everything it has to offer its residents. Key components of the program include:

- Meeting the decision makers in business, education, health care, government, social services, arts and law enforcement
- Learning about the issues and asking the hard questions that affect Martin County
- Touring area facilities and their operations
- Networking with other leaders and making your voice heard and
- Committing to one program day a month for ten months.

For more information, contact LEADERship Martin County Program Director, Cindy LaConte, at [claconte@stuartmartinchamber.org](mailto:claconte@stuartmartinchamber.org) or (772) 287-1088, extension 106. Visit <https://www.stuartmartinchamber.org/the-chamber/leadership> to learn more.

**Class 29 applications will be available April 2018.**



## Making a difference

LEADERship Martin County is an exciting program designed to prepare potential leaders to meet the challenges facing Martin County. Participants will explore critical issues through a series of presentations, seminars and field trips. Interaction with key decision makers, experts, community leaders and government representatives will assist participants in understanding the forces that impact their community, business and daily lives.

The success of the program, now in its 28th year, is reflected in the broad base of leaders who have gone through the program and chosen to make

a difference. CEO's of many businesses and Non-Profit Organizations have been through the program, along with elected officials such as City and County Commissioners, Sheriff, City Police Chief, Property Appraiser, Clerk of the Court, Superintendent of Schools, School Board Members and many State Legislators.

“  
**Learn the tools to make a difference in Martin County.”**